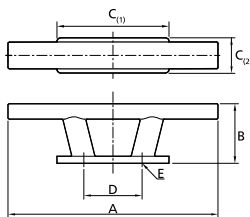


## Deck equipment

### Cleats and bollards



**TAURUS..**



### Cleats type TAURUS

All models (except TAURUS06 and 07) are tapped on the underside so that no fastenings are visible. Made of high-gloss polished stainless steel (AISI 316).

Type	SWL*	A	B	C	D	E
TAURUS01	575 kgf	140	50	89,5 x 30	47	2 x M8
TAURUS02	900 kgf	195	60	120,5 x 35	69	2 x M10
TAURUS03	1310 kgf	255	75	150 x 40	83	2 x M12
TAURUS04	2470 kgf	300	85	160 x 50	83	2 x M16
TAURUS05	2470 kgf	300	85	200 x 85	83	2 x M16
TAURUS06**	2620 kgf	300	85	200 x 85	130 x 55	4 x Ø12,5
TAURUS07***	3600 kgf	250	70	250 x 40	105	3 x Ø12,5

\* SWL = Safe working load

\*\* Four holes in a rectangle as dimensioned by D. Holes are 90° countersunk.

\*\*\* Three holes in line with 105 mm in between. Holes are 90° countersunk.



**ACHIL...**



**ACHIL...Z**

### Bollards type ACHIL

Made of high-gloss polished stainless steel (AISI 316).

Bollards type ACHILZ are for direct welding to the deck. Dimensions are similar to ACHIL.

Type	SWL*	A	B	Ø	C	D	E
ACHIL080	620 kgf	120	90	40	80 x 65	52	4 x Ø6,5
ACHIL090	620 kgf	130	95	50	92 x 92	52	4 x Ø6,5
ACHIL110	1150 kgf	160	120	60	122 x 97	70	4 x Ø6,5
ACHIL130	1150 kgf	180	142	70	140 x 118	82	4 x Ø8,5
ACHIL150	1800 kgf	200	172	80	153 x 122	100	4 x Ø10,5
ACHIL160	2620 kgf	255	195	90	165 x 135	120	4 x Ø12,7
ACHIL080Z	620 kgf	120	80	40	-	42	-
ACHIL090Z	620 kgf	130	90	50	-	47	-
ACHIL110Z	1150 kgf	160	110	60	-	60	-
ACHIL130Z	1150 kgf	180	130	70	-	70	-
ACHIL150Z	1800 kgf	200	150	80	-	78	-
ACHIL160Z	2620 kgf	255	160	90	-	82	-

Type	Description
ACHIL090B	Bollard type Achilles 90, with bolt mounting

Bollard type ACHIL090B for small craft is fastened by means of two M8 bolts. Dimensions are similar to ACHIL090.

\* SWL = Safe working load

