



INSTALLATION MANUAL
MASTERVOLT SOFTSTARTER

SOFTSTART 22kW

MASTERVOLT SOFTSTART

This SOFTSTARTER is developed by MASTERVOLT to ensure daily comfort on board.

MASTERVOLT has many of years experience in the field of on board energy systems:

- as a producer of high end MASTERVOLT inverters and battery-chargers.
- as a system-supplier of high end system components.

The MASTERVOLT energy systems are constructed from the best possible components which are carefully selected and tested.

All system components are fully optimized and tested by the MASTERVOLT development department for energy systems, this assures reliable operation of the MASTERVOLT product.

During the two years guarantee period or after, you can depend on our international network of MASTERVOLT support centres in case of problems or complaints.

1. General

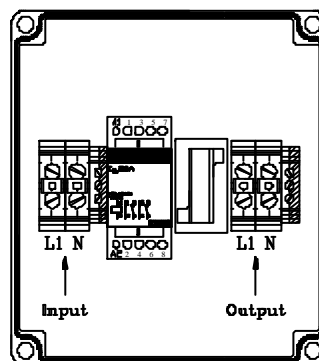
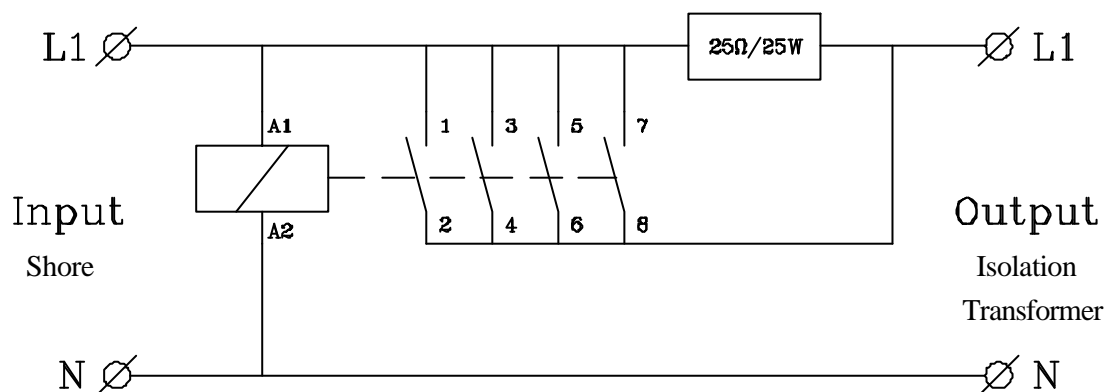
The MASTERVOLT SOFTSTART is developed to reduce the inrush current of an isolation transformer. When inductive loads like a transformer or electrical engines are switched on, the inrush current can be 10 times higher than the nominal current. Often a softstarter is necessary to make sure the shore fuse will not blow, when a shore connection is made. The inrush current is often too high for most of the shore connections with normal fuses.

The MASTERVOLT SOFTSTART reduces the inrush current to an acceptable value.

2. Installation

The MASTERVOLT SOFTSTART must be connected between the shore connection and the transformer, the softstart is now in series with the shore connection and the isolation transformer.

Schematic softstart:



3. Specifications

type : Softstart 22kW

General

Voltage : 230V

Nominal current : 95A

Power : 22kW

Terminals

Inputs : Phoenix 35mm² clamps

Outputs : Phoenix 35mm² clamps

Enclosre

Case size : 190 x 190 x 135 mm (HxWxD)

Weight : 1.2 kg

Degrees of protection : IP55 (IEC-947)

Colour : RAL 7035 (grey/white)