



Motor Flusher "C"

Code 52.749.03

Designed for washing outboard engines Mercury/Mariner 4/5HP, made of **turned brass**.

OSCULATI



Motor flusher D

Washing system for outboard engines equipped with threaded connector. The system consists in a special threaded valve + snap fitting 36.189.02 The valve can be permanently installed on the outboard engine.

The valve can be permanently installed on the outboard.

Code	Description
52.749.10	Kit for Johnson / Evinrude
52.749.11	Kit for Mercury / Yamaha and all others



Accessories and spare parts for outboard

OSCULATI



Manual siphon pump

This siphon pump easily transfers any liquid (water, diesel, petrol, etc.) from a container to another preventing dirt and fatigue.

Place the pump into the container with the liquid and the end of its hose into the transfer container; take care to place the second container at a slightly lower level.

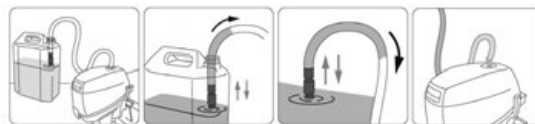
By ensuring that the second container is placed at a slightly lower level than the first, it will be sufficient to stir the pump in the liquid to allow it to rise up to the goose neck of the tube, at which point it will activate the transfer by "falling" into the receiving container.

To stop the flow, it will be sufficient to remove the pump from the liquid.

Made of copper and complete with 1.7 m of tubing. Does not require electricity, fast, safe, and clean.



Code	Net passage mm	Tube Ø mm	Flow l/min
52.739.00	14	15	10
52.739.01	18	19	15



OSCULATI



Blue Bag thermo-welded water-proof engine cover

Designed to protect the foot of the **outboard motor** or **stern drive** from marine vegetation (silt, dog's teeth, coral, and other species) and from galvanic currents.

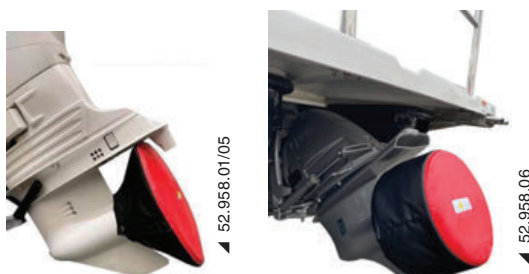
The foot cover can also be used as a container for the **freshwater rinse of the cooling circuit**, without airing the boat.

Assembly/disassembly takes only a few moments and the robust fabric with double PVC coating ensures a long product lifespan.

Version with **front recess** that allows for a better fit on the foot.

Code	For engines
52.757.01	Up to 80 HP outboard
52.757.02	Over 80 HP outboard + sterndrive units
52.757.03	Over 250 HP outboard + sterndrive units

OCEANSOUTH



New Oceansouth Propeller Protection

Made of high-resistance, UV-resistant polyester.

Padded with 6-mm polyurethane foam, reinforced seams and snap button fastening.

Sturdy handle and non-slip interior to ensure ease and stability during transport.

High-visibility color for increased safety during towing.

Code	Ø mm
52.958.01	200
52.958.02	260
52.958.03	320
52.958.04	360
52.958.05	410
52.958.06	435 (double/twin)