



ACCESSORI E COMPONENTI PER SALPA ANCORA

WINDLASS ACCESSORIES AND PARTS

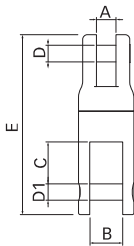
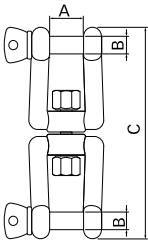
SWIVELS

Girelle e giunti girevoli / Jaw jaw swivels and swivels
 Acciaio inox AISI 316 / AISI 316 Stainless steel



SW

SH



Tipo accessorio / Type accessory		Girelle / Jaw jaw swivels					
Modelli Models		SW6		SW8		SW10	
Catena raccomandata Recommended chain size		6 mm		7/8 mm		8/10 mm	
Dimensioni (mm) Dimensions (inches)	A	12 mm	15/32	15 mm	19/32	18 mm	45/64
	B	Ø 6 mm	Ø 15/64	Ø 8 mm	Ø 5/16	Ø 10 mm	Ø 25/64
	C	66 mm	2" 19/32	94 mm	3" 45/64	118 mm	4" 41/64

Tipo accessorio / Type accessory		Giunti girevoli / Swivels					
Modelli Models		SH8		SH10		SH14	
Catena raccomandata Recommended chain size		6/8 mm		10 mm		12/14 mm	
Dimensioni (mm) Dimensions (inches)	A	10 mm	25/64	13 mm	33/64	18 mm	45/64
	B	15 mm	19/32	22 mm	55/64	28 mm	1" 7/64
	C	22 mm	55/64	28 mm	1" 7/64	32 mm	1" 17/64
	D	Ø 7 mm	Ø 9/32	Ø 11 mm	Ø 7/16	Ø 14 mm	Ø 35/64
	D1	Ø 10 mm	Ø 25/64	Ø 11 mm	Ø 7/16	Ø 16 mm	Ø 5/8
E	92 mm	3" 5/8	120 mm	4" 23/32	140 mm	5" 33/64	

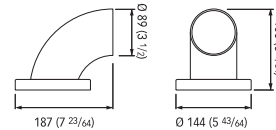


CHAIN PIPES

Passacatena per salpa ancora serie ROY
 Chain pipe for windlasses ROY Series

Model PC - RY6

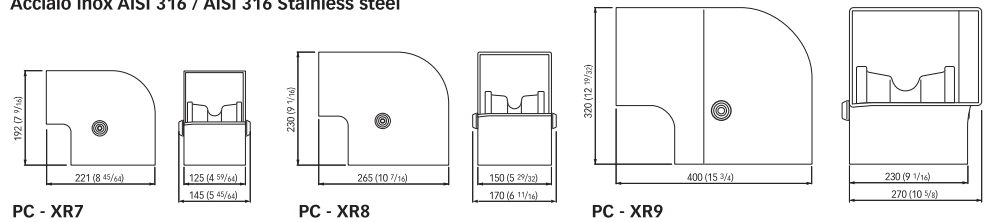
Acciaio inox AISI 316 / AISI 316 Stainless steel



Passacatena per salpa ancora serie XROY
 Chain pipe for XROY Series windlasses

Model PC DX - XR7 / PC SX - XR7
 Model PC DX - XR8 / PC SX - XR8
 Model PC DX - XR9 / PC SX - XR9

Acciaio inox AISI 316 / AISI 316 Stainless steel



CHAIN STOPPERS

Ferma catena / Chain stopper

Acciaio inox AISI 316 / AISI 316 Stainless steel



Modello / model	Catene / Chains				
	Shortlink				
Taglia / Size	8 mm	10 mm	12 mm	13 mm	14 mm
CS 8	●				
CS 10		●			
CS 12-14			●	●	●

