



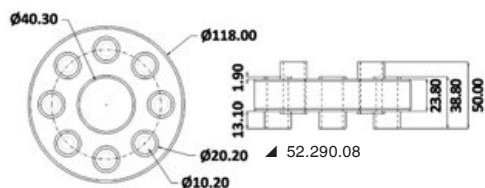
## Spare parts for inboard engines and stern drive units



▲ 52.290.08



▲ 52.290.16

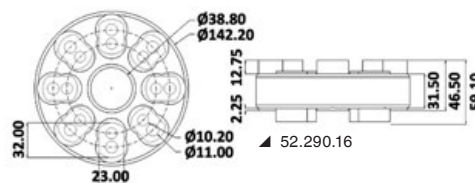


▲ 52.290.08

### Elastic coupling joints

To be placed between the shaft of the propeller and the inverter.  
Made of nitrile rubber on aluminium bushing.

Code	Version	Max HP
52.290.08	8 bores	25
52.290.16	16 bores	110



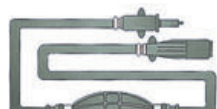
▲ 52.290.16

## Pipes and fuel hoses

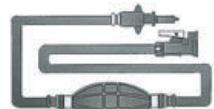
**OSCULATI**



▲ 52.731.70



▲ 52.731.75



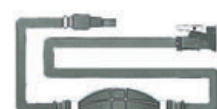
▲ 52.731.76



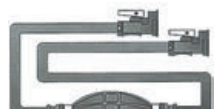
▲ 52.731.77



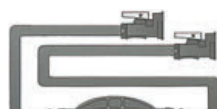
▲ 52.731.71



▲ 52.731.81



▲ 52.731.78



▲ 52.731.79



▲ 52.731.80



▲ 52.731.90/91

### Fuel pipe

Manufactured with special co-extruded tube with interposed polyester mesh.  
Section 8x13 mm, resistant up to 15 bar.  
Complete with enhanced pump, suitable for green petrol.

Code	Version	Length m
52.731.90	Without terminal joints	2
52.731.91	Without terminal joints	3
52.731.70	With OMC Suzuki joint up to 140HP 4 T	2
52.731.71	With Honda terminal joint	2
52.731.80	With 2 OMC joints (equal to the original)	3
52.731.75	With 2 Mercury joints (male or female), for engines up to year 1987	3
52.731.77	With Yamaha/Mercury/Mariner joint, model after year 1987	2
52.731.78	With two Yamaha joints, model after year 1987	3
52.731.76	With two Mercury/Mariner joints after year 1987	3
52.731.79	With two Mercury female joints after year 1998	3
52.731.81	With two Suzuki joints up to 140 HP 4 T	3

