

SAIL cleat**AISI 316**

Made of mirror-polished AISI316 stainless steel.

Code	Length mm	Height mm	Stud Ø mm	hole spacing mm	Breaking load kg
40.138.21	220	52	2 x 6.5-mm holes	60	3785
40.138.22	220	52	8	60	3691
40.138.26	260	58	10	70	5806
40.138.30	300	65	12	81	5880

**Belaying cleat****AISI 316**

Mirror-polished finish, very sturdy, stylish design.

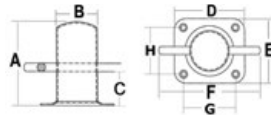
Code	Length mm	Wheelbase long. mm	Transverse spacing mm	Breaking load kg
40.129.15	150	51.8	41.5	4507
40.129.20	200	57.2	41.6	3022
40.129.25	250	54.4	45.2	3328
40.129.30	300	65	58	5219

**Ercle cleat****AISI 316**

Made of mirror-polished AISI316 stainless steel.

Code	A mm	B mm	C mm	D mm	E mm	F mm	G mm	H mm	Ø screw hole mm
40.179.50	100	Ø 50	55	91	91	130	60	60	6.5
40.179.60	120	Ø 60	70	120	95	180	95	70	6.5
40.179.70*	142	Ø 70	82	140	118	180	105	80	8.5

* Cast base

**Stainless steel stud kit for cleats**

Supplied with nuts and washers (2 studs, 2 nuts, 2 washers).

Code	mm	Recommended for bollards
40.142.06	6x60	40.133.15
40.142.08	8x60	40.133.20 - 40.174.18 - 40.138.22 - 40.137.01
40.142.09	8x80	40.131.16
40.142.10	10x60	40.133.25 - 40.173.16 - 40.138.26 - 40.137.02
40.142.11	10x80	40.131.20 - 40.131.25
40.142.12	12x100	40.133.30 - 40.138.30 - 40.137.03 - 40.174.24
40.142.14	14x100	40.173.20 - 40.173.24
40.142.16	16x120	40.173.30 - 40.173.35 - 40.174.30 - 40.174.37 - 40.137.04 - 40.137.05
40.142.20	20x120	40.137.06 40.137.08
		40.173.42 - 40.173.45


**Butyl tape PSP MARINE TAPES for watertight seals**

Tape made of soft and malleable material that creates a waterproof joint to be used when fastening bollards and deck equipment.

Used wherever a waterproof seal is needed between two surfaces; suitable for sealing fiberglass, metal, plastic, glass.

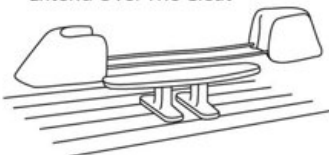
Code	Roll	Colour
65.123.00	15x2 mm x 3 m	grey

**Cleat boots**Made of **white ABS**. Extend over the cleat, hook one end and then the other. To prevent tumbling while walking on the deck.

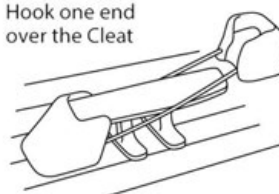
Code	Universal for cleats	 ORDER BY BOX
40.113.00	200 to 300 mm	4 boots for 2 cleats



Extend Over The Cleat



Hook one end over the Cleat



Put the other end

