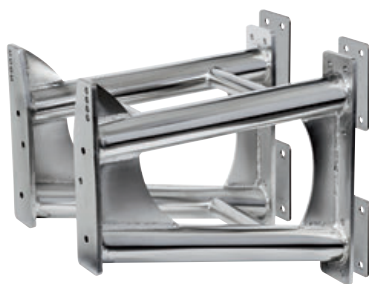


U Douglas Marine



Engine support Bracket in stainless steel

Universal Stainless Steel Model
For outboard engines from 140 to 300 HP.
Built with utmost precision, it enhances performance and increases available space on board.
Including 4 counterplates for mounting.

Code	For outboard up to	Total weight
47.375.06	From 140 to 300 HP	35.2



▲ 47.250.00



▲ 47.250.02

CMC electro-hydraulic outboard lift

Made of **6061 T6 aluminium alloy**, fitted with **stainless steel** nuts and bolts and **bronze-aluminium** bearings. Supplied with position indicating device and control switch to mount on the control panel.

Code	V	For FB MAX	Stroke mm	Speed mm/min	Stern overhang mm	←→ mm	kg
47.250.00	12	V6	125	93	140	460x418	21.5
47.250.02*	12	V8	125	71	140	460x418	30.5

* Model for V8 engines (Yamaha 300 HP), extremely reinforced with extruded SS guides and rails.



▲ Position indicator



Outboard engine towing stay

Used to lift the outboard motor from the foot when the hull is loaded onto the trailer or into storage.
It is adjustable and universal for every model.
The foot support is made of **rubber** with securing straps.
Maximum capacity 150 HP.

Code	Adjustable
47.110.96	from 50 to 80 cm

Lifting harness for outboard engines

OSCULATI



▲ 47.391.00

Lifting harness for outboard engines

Equipped with a top handle, universal for all outboard motors on the market.
Essential for moving the outboard from the **Pram to the stern pulpit** and vice versa.

Code	Model	Suggested for engines
47.391.00	Standard	max 15 - kg 35
47.391.02	HEAVY DUTY	max 25 - kg 50

Ideal for little cranes such as 42.360.00



▲ 47.391.02



▲ Video