



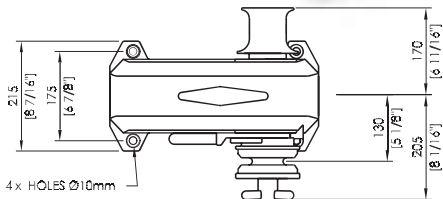
Compact 1600/2500

HR1600
Cougar

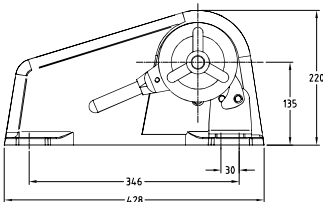
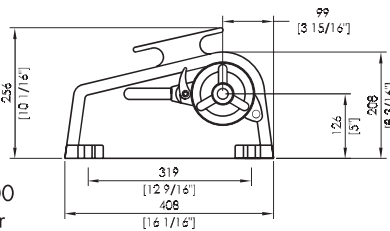
New lightweight housing



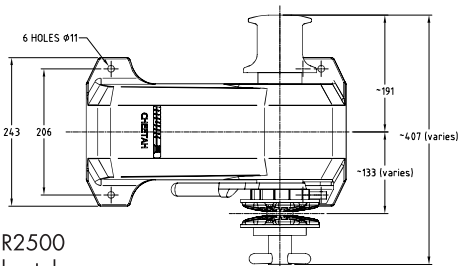
HR2500
Cheetah



HR1600
Cougar



HR2500
Cheetah



Model	HR1600 Cougar	HR2500 Cheetah
VESSEL LENGTH	9 - 13m 29 - 42ft	13 - 17m 42 - 55ft
POWER SUPPLY (DC)	12/24V	12/24V
MOTOR (Watts)	1000	1200
HYDRAULIC PRESSURE	N/A N/A	10MPa 1450PSI
HYDRAULIC FLOW	N/A N/A	20L/min 5.5gal/min
MAX LOAD	545kg 1200lb	1136kg 2500lb
WORK LOAD	125kg 275lb	284kg 624lb
AMPS WORK LOAD	100/60	120/75
MAX LINE SPEED	14.5m/min 46ft/min	15m/min 48ft/min
CHAIN SIZE	6 - 8 - 10mm 1/4 - 5/16 - 3/8"	8 - 10 - 13mm 5/16 - 3/8 - 1/2"
ROPE SIZE	12 - 14 - 16mm 1/2 - 9/16 - 5/8"	14 - 16 - 19mm 9/16 - 5/8 - 3/4"
NET WEIGHT	DC 25kg HYD 24kg DC 55lb HYD 53lb	DC 36kg HYD 35kg DC 79lb HYD 77lb
MANUAL OPERATION	MORS (std)	MORS (std)

Features

- Rope chain combination gypsy for rope & chain combination or chain only
- Manual Override System (MORS)
- Gypsy lock/pawl
- Cleat on housing
- Heavy duty dual direction motor in 12 & 24V DC, Hydraulic (HR2500 only)
- Durable marine grade white gloss finish alloy housing
- Fully enclosed motor & gearbox
- Independent gypsy and capstan operation
- Luxury chromed marine grade bronze / 316 Stainless steel running gear
- Stainless steel drive shaft
- Cone clutch/brake
- Shaft seal
- Clutch release handle
- Installation/Operation booklet

Options

- Twin gypsy, twin capstan
- Rope Chain Management System (RCMS)
- Housing without cleat
- Traditional polished bronze finish on running gear
- Full range of accessories including chain, rope, anchors, anchor roller, chain pipes, chain stoppers, snubber kits & devil claws
- Electric & hydraulic operating options & accessories
- Auto anchor

